

# Brawley Consulting Group, LLC

## *Land Conservation and Management Services*

---

June 30, 2020

Mr. Rob Hiltbrand  
R.R. Hiltbrand Engineers & Surveyors  
575 North Main Street  
Bristol, Connecticut 06010

Subject: Whip-poor-will surveys, Burlington, CT

Dear Mr. Hiltbrand,

Per your request I have surveyed the property located on Prospect Street in Burlington for the presence of whip-poor-will (*Caprimulgus vociferous*), a nocturnal State-listed bird species typically associated with open woodland habitats. The project site contains an active gravel pit/operation and also approximately 20 acres of undeveloped, relatively mature oak/hemlock dominated woodland.

To determine whether whip-poor-will are breeding on the site, I established three survey points within the woodland area that were between 150-175 meters apart (See Fig. 1.). The survey methods and timing were based on recommendations from Shannon Kearney at the Connecticut DEEP Wildlife Division. The surveys were conducted on June 8, June 13 and June 17, 2020 between the hours of 10:00 and 1:00 PM). The optimal dates for the surveys were obtained from the *Nightjar Survey Network* website <http://www.nightjars.org/>.

Ideal survey conditions for whip-poor-will are when the moon is at least half illuminated and above the horizon (and not obscured by clouds) and there is minimal wind. A six-minute survey was conducted at all three points consisting of 3 minutes of silent listening, followed by a callback, followed by 3 minutes of silent listening. The weather during each visit was ideal.

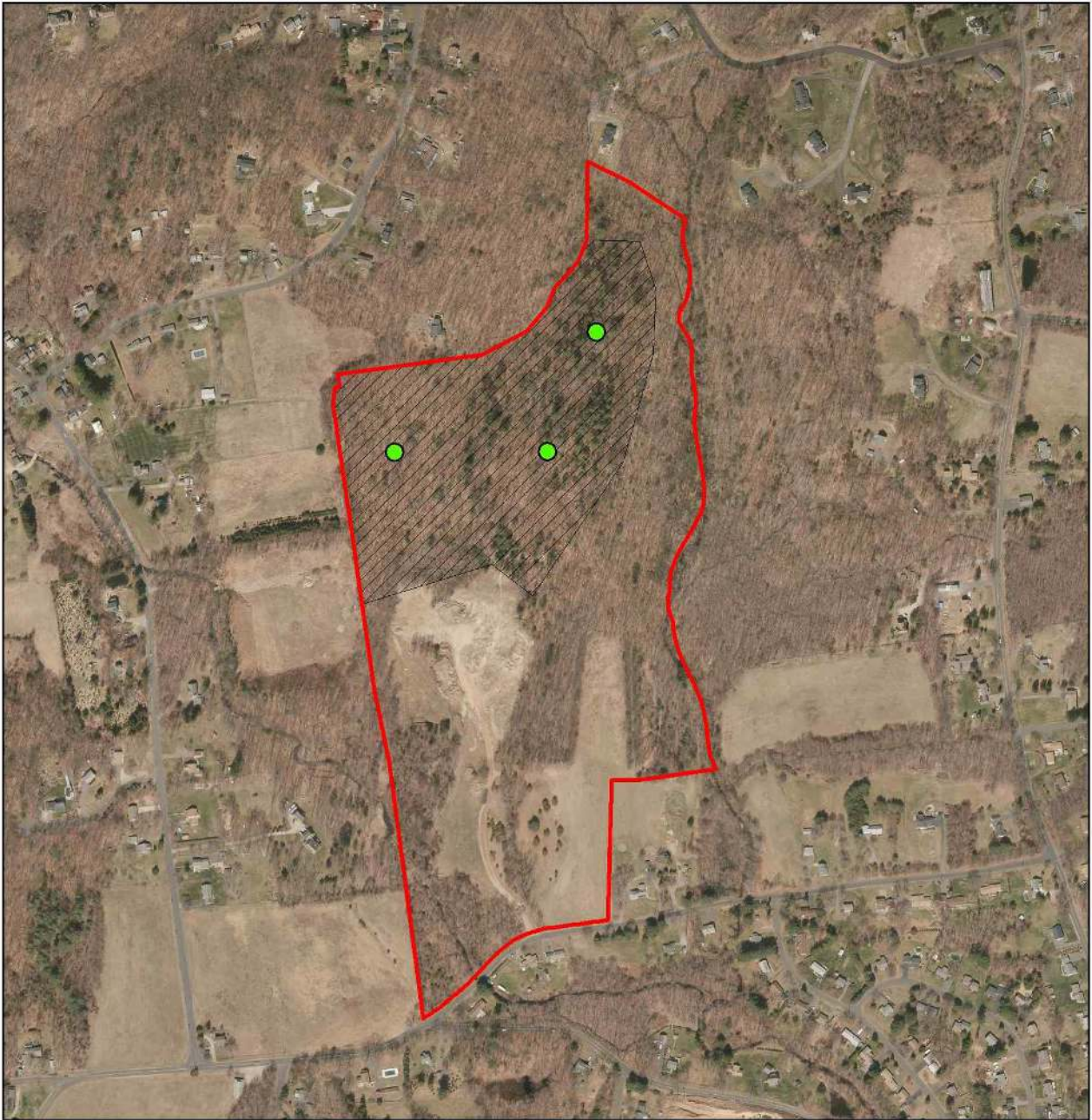
Whip-poor-will was not recorded on the site during any of the three visits. I suspect the on-going gravel operation and extensive ATV use throughout the woodlands may create suboptimal breeding habitat for this ground-nesting species.

Please feel free to contact me to discuss the surveys and results if you have any questions. My qualifications are attached.

Sincerely,






A. Hunter Brawley,  
Brawley Consulting Group, LLC  
Windsor, CT




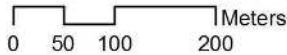
**Survey Point Locations**  
 Solar One Project  
 Prospect Street  
 Burlington, CT

*NOTES*  
 (1) This map contains no authoritative data and is intended for planning purposes only; (2) Basemap data sources include USGS topographic (USA TOPO) maps & 2016 CT DEEP Orthophotography; (3) parcel shapes are approximate.

**Legend**

-  Solar One Burlington
-  Approx. Project Area
-  Survey Points

**SCALE**

0 50 100 200 Meters

Map Prepared By:  
 Brawley Consulting Group, LLC  
 95 Pilgrim Drive  
 Windsor, CT 06095  
[www.brawleycg.com](http://www.brawleycg.com)

**A. Hunter Brawley**

95 Pilgrim Drive, Windsor, CT 06095

Cell: 203-525-5991

[hbrawley@gmail.com](mailto:hbrawley@gmail.com)

[www.brawleycg.com](http://www.brawleycg.com)

---

***PROFESSIONAL EXPERIENCE***

**Owner/Manager, Brawley Consulting Group, LLC, Windsor, CT**

(January 2008 to present).

Provides land conservation and management services to land trusts and other conservation organizations, including design and implementation of habitat restoration projects, bird and wildlife surveys, grant writing, trail design and construction, monitoring conservation easements and fee properties, boundary posting and preparation of Baseline Documentation Reports and Property Management Plans. [www.brawleycg.com](http://www.brawleycg.com)

**Land Manager, Naromi Land Trust, Sherman, CT**

(March 2004 to September 2016).

Manage all land trust properties and help acquire, monitor and enforce conservation easements. Responsibilities also include designing and building trails, securing funding for habitat restoration projects, and assisting with organizational and administrative tasks. Work cooperatively with the town and other conservation organizations to identify and prioritize lands for future acquisition. [www.naromi.org](http://www.naromi.org)

**Land Manager, Kent Land Trust, Kent, CT**

(September 2008 to August 2014).

Manage all land trust properties and help acquire, monitor and enforce conservation easements. Responsibilities also include securing funding for habitat restoration projects and preparing baseline documentation reports (BDRs) and property management plans. Addressed backlog of stewardship items required for Kent Land Trust to become the second land trust in Connecticut accredited by the Land Trust Alliance.

**Project Manager, Northeast Instream Habitat Program, Amherst MA.**

(January 2004 to March 2005).

Coordinated all facets of two fisheries habitat assessment projects working with researcher at the University of Massachusetts, including project planning, data collection, hiring and overseeing seasonal staff, data analysis and report preparation.

**Executive Director, Pomperaug River Watershed Coalition, Southbury, CT**

(July 2001 to May 2003).

Managed all activities of non-profit watershed management organization dedicated to conserving regional water resources, including research, outreach, budgets, grant writing, website development, fundraising, and volunteer relations. [www.pomperaug.org](http://www.pomperaug.org)

**Senior Project Manager, LabLite LLC, New Milford, CT**

(January 2000 to June 2001).

Product development, testing, sales, and customer service for a software company that provides Laboratory Information Management Software (LIMS) to environmental and other laboratories. [www.lablite.com](http://www.lablite.com)

**Research Coordinator, The National Audubon Society, Southbury, CT**

(March 1998 to January 2000).

Designed and implemented all research on birds and other wildlife at the 625-acre wildlife sanctuary. Conducted natural resources inventory, created checklists of wildlife and plants, established environmental education programs, and coordinated cooperative research projects with state agencies and regional conservation organizations. [http://ct.audubon.org/IBA\\_BOR.html](http://ct.audubon.org/IBA_BOR.html)

**Environmental Analyst, Land-Tech Consultants, Inc., Southbury, CT**

(November 1996 to February 1998).

As Project Manager conducted environmental impact statements, wetland assessments, and wildlife surveys; prepared federal, state and local permit applications; designed pond and tidal wetland restoration projects; and conducted lake diagnostic studies. Worked with state agencies and local land use agencies to mitigate impacts of residential and commercial development projects. [www.landtechconsult.com](http://www.landtechconsult.com)

**Wetland Ecologist, The Deep River Land Trust, Deep River, CT.**

(July to October 1995).

Worked in association with The Nature Conservancy Connecticut Chapter on a conservation project at two freshwater tidal marshes in the lower Connecticut River. Project entailed mapping dominant vegetation communities, identifying potential environmental impacts, researching information on appropriate buffer zones and recommending methods for long-term monitoring of the system.

**Research Assistant, The Nature Conservancy CT Chapter, Weston, CT.**

(May to July 1995).

Assisted with research on the productivity and survivorship of Worm-eating Warblers at the 1700-acre Devil's Den Preserve in Weston, CT. Responsibilities included mist-netting, bird banding, and locating and monitoring approximately 25 nest sites throughout the breeding season.

**Master's Thesis Research, Connecticut College, New London, CT.**

(September 1993 to May 1995).

Conducted two-year study investigating relationships between bird populations and environmental conditions in tidal wetlands of Connecticut. Quantified bird use, vegetation, and selected environmental parameters in eight tidal marsh systems on the Long Island Sound to assess the use of birds as indicators of environmental quality.

**Research Associate, Connecticut College Arboretum, New London, CT.**

(Sept. 1992 to January 1994).

Conducted a natural resources inventory of The Harriet C. Moore Foundation property in Westerly, RI, including producing lists of all plants and animals (flora and fauna), conducting a breeding bird census, and identifying and tagging over 100 ornamental trees. Developed a five-year plan for the management and use of this 35-acre public land preserve.

**Principal Investigator, The Nature Conservancy CT Chapter, Middletown, CT**

(summer 1994).

Studied five marshes in the tidelands of the lower Connecticut River to assess the impacts of the spread of common reed (*Phragmites australis*) on bird populations. Designed project that included the systematic collection of data on bird use, vegetation sampling and an analysis of physical site characteristics.

### ***EDUCATION***

Connecticut College, New London, CT. Master of Arts in Botany, 1995.  
Connecticut College, New London, CT. Bachelor of Arts in American History, 1982.  
The Loomis Chaffee School, Windsor, CT. Graduated 1978.

### ***PUBLICATIONS***

Brawley, A. H., Zitter, R. and L. Marsicano, Editors. 2005. Candlewood Lake Buffer Guidelines. Candlewood Lake News *Special Edition*, Vol 1:21.

Warren, R.S., P. E. Fell, R. Rozsa, A. H. Brawley, A. C. Orsted, E. T. Olson, V. Swamy and W. A. Niering. 2002. Salt Marsh Restoration in Connecticut: 20 years of Science and Management. *Restoration Ecology* 10 (3) 497-513.

Markow, J. and H. Brawley. 2001. Herpetofaunal and Avifaunal Surveys of Vaughn's Neck Peninsula, Candlewood Lake, Connecticut. Report to the Town of New Fairfield, CT. 32 p.

Brawley, A. H. 1998. A Vegetation Survey and Conservation Analysis of Vaughn's Neck Peninsula. Report to The Candlewood Lake Authority. The National Audubon Society. 11 p.

Brawley, A. H., R. S. Warren and R. A. Askins. 1998. Bird Use of Restoration and Reference Marshes Within the Barn Island Wildlife Management Area, Stonington, Connecticut, USA. *Environmental Management* 22(4): 625-633.

Marsicano, L. J. and A. H. Brawley. 1997. Land Use, Watersheds, and Aquatic Resources. *Connecticut Woodlands* 62(3): p. 21.

Niering, W. A., and A. H. Brawley. 1996. Functions and Values Assessment of Area A Downstream Wetlands and Watercourses. Naval Submarine Base New London, Groton, CT. Report to Brown & Root Environmental, The Environmental Protection Agency, and The United States Navy. 36 p.

Brawley, A.H. 1995. Pratt and Post Coves: A Vegetation Survey and Conservation Analysis. Report to the Deep River Land Trust, Deep River, CT. 62 p.

Brawley, A.H. 1995. Birds of Connecticut's Tidal Wetlands: Relating Patterns of Use to Environmental Conditions. Master's Thesis, Connecticut College, New London, CT. 87 p.

Brawley, A.H. 1994. Birds of the Connecticut River Estuary: Relating Patterns of Use to Environmental Conditions. Report to the Nature Conservancy Connecticut Chapter Conservation Biology Research Program, Middletown, CT. 23 p.

Brawley, A.H., G.D. Dreyer. 1994. Master Plan for the Future Management and Use of Moore Woods. Connecticut College Arboretum Publication. New London, CT. 65 p.

Brawley, A.H., G.D. Dreyer and W.A. Niering. 1993. Connecticut College Arboretum Phase One Report to the Harriet Chappell Moore Foundation. Connecticut College Arboretum Publication. New London, CT. 100 p.

### ***ACTIVITIES***

Forest and Trails Conservation Committee, Connecticut Forest & Park Association (CFPA)  
Coverts Project Cooperator, UConn Cooperative Extension System